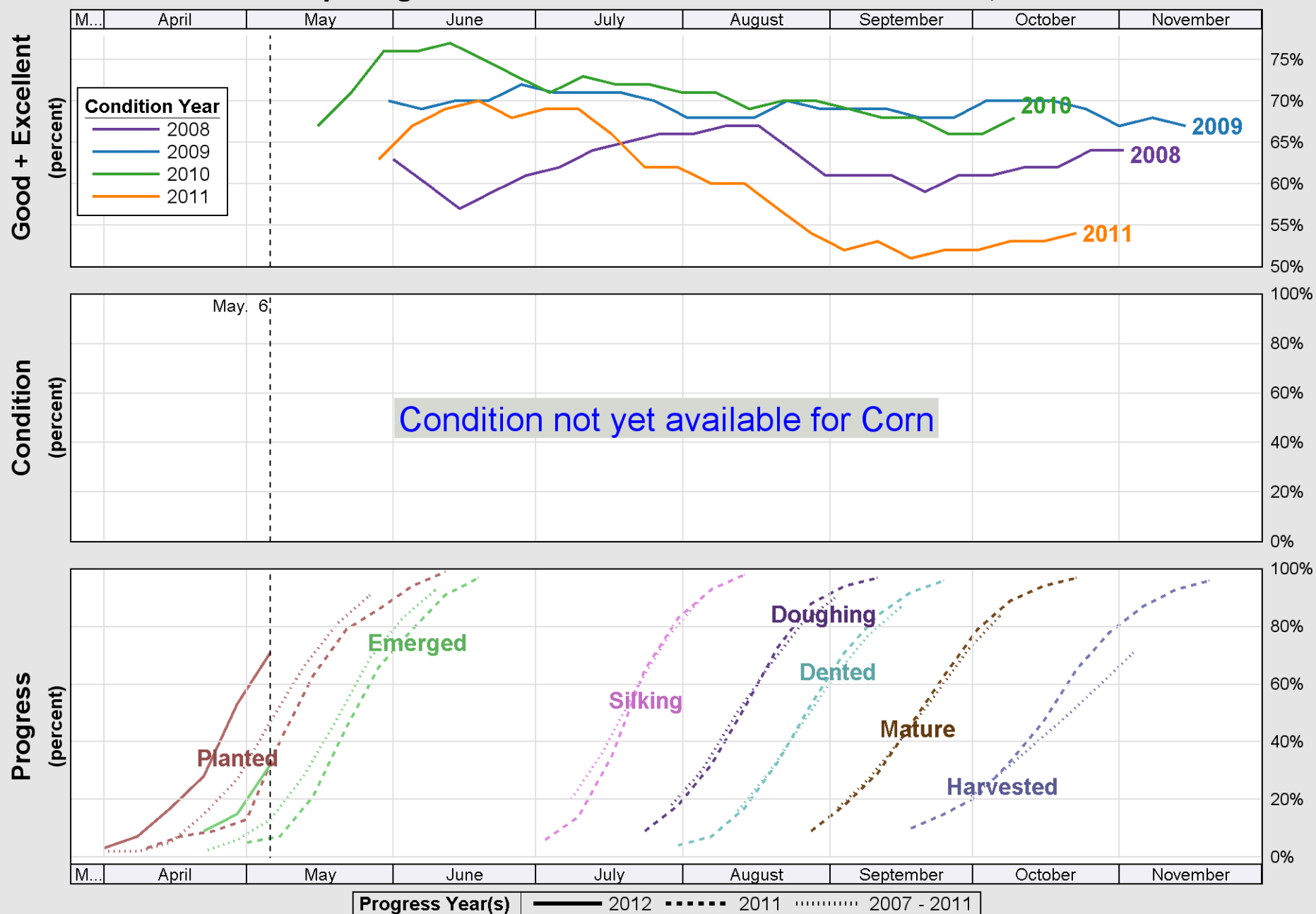


USDA

## Crop Progress and Condition: Corn in United States , 2012

NASS

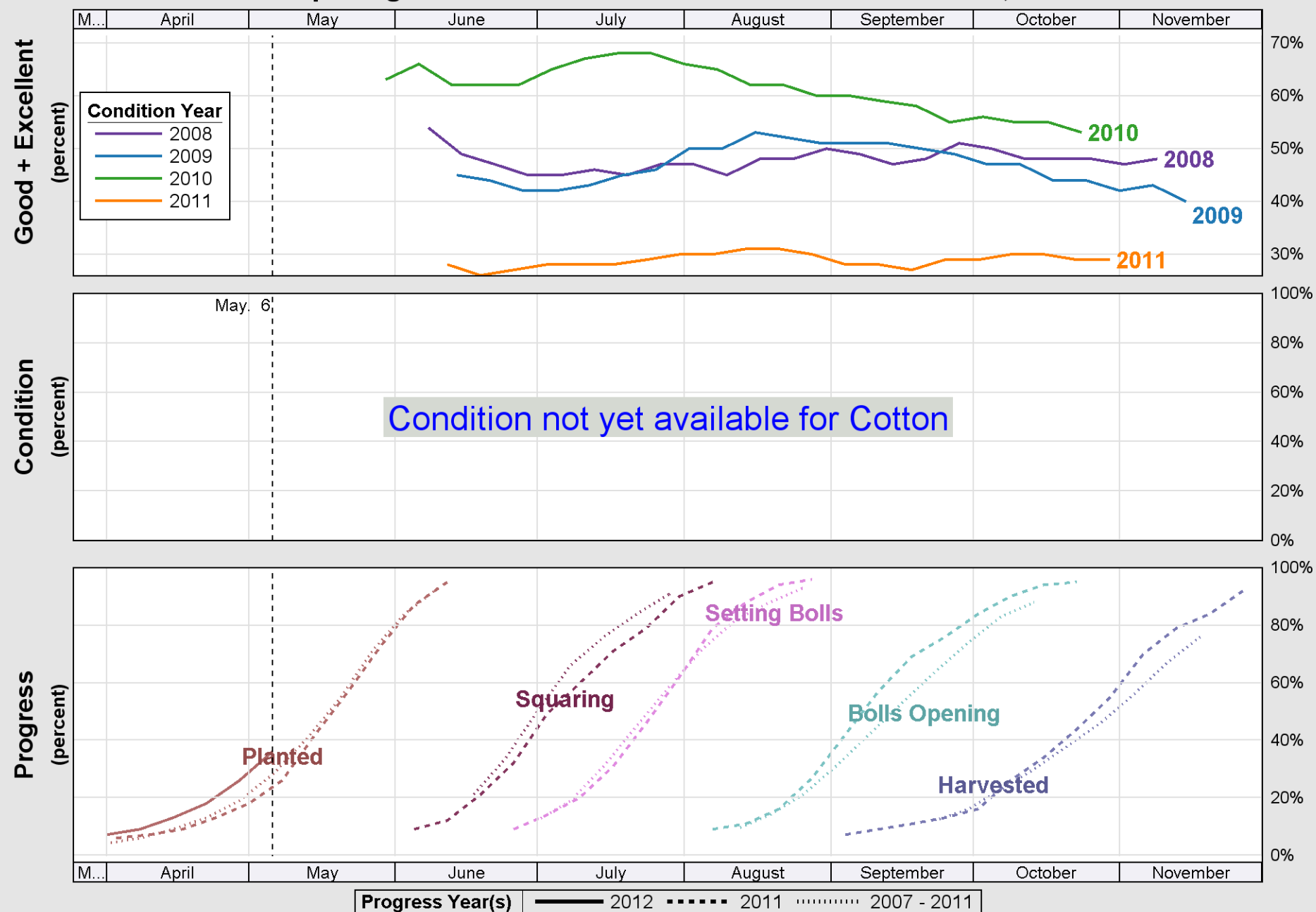


Source: National Agricultural Statistics Service (NASS), Crop Progress Report

USDA

## Crop Progress and Condition: Cotton in United States , 2012

NASS

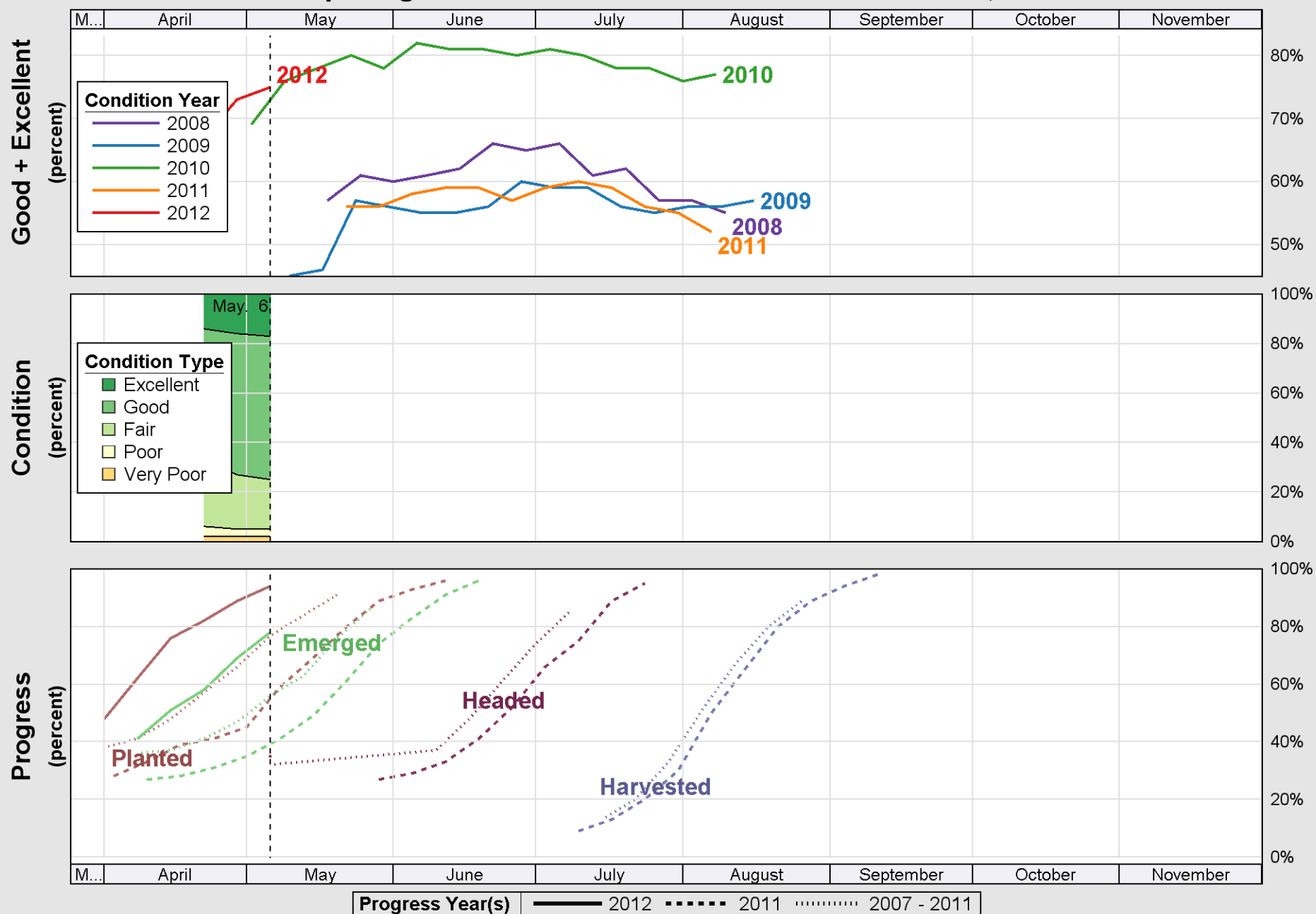


Source: National Agricultural Statistics Service (NASS), Crop Progress Report

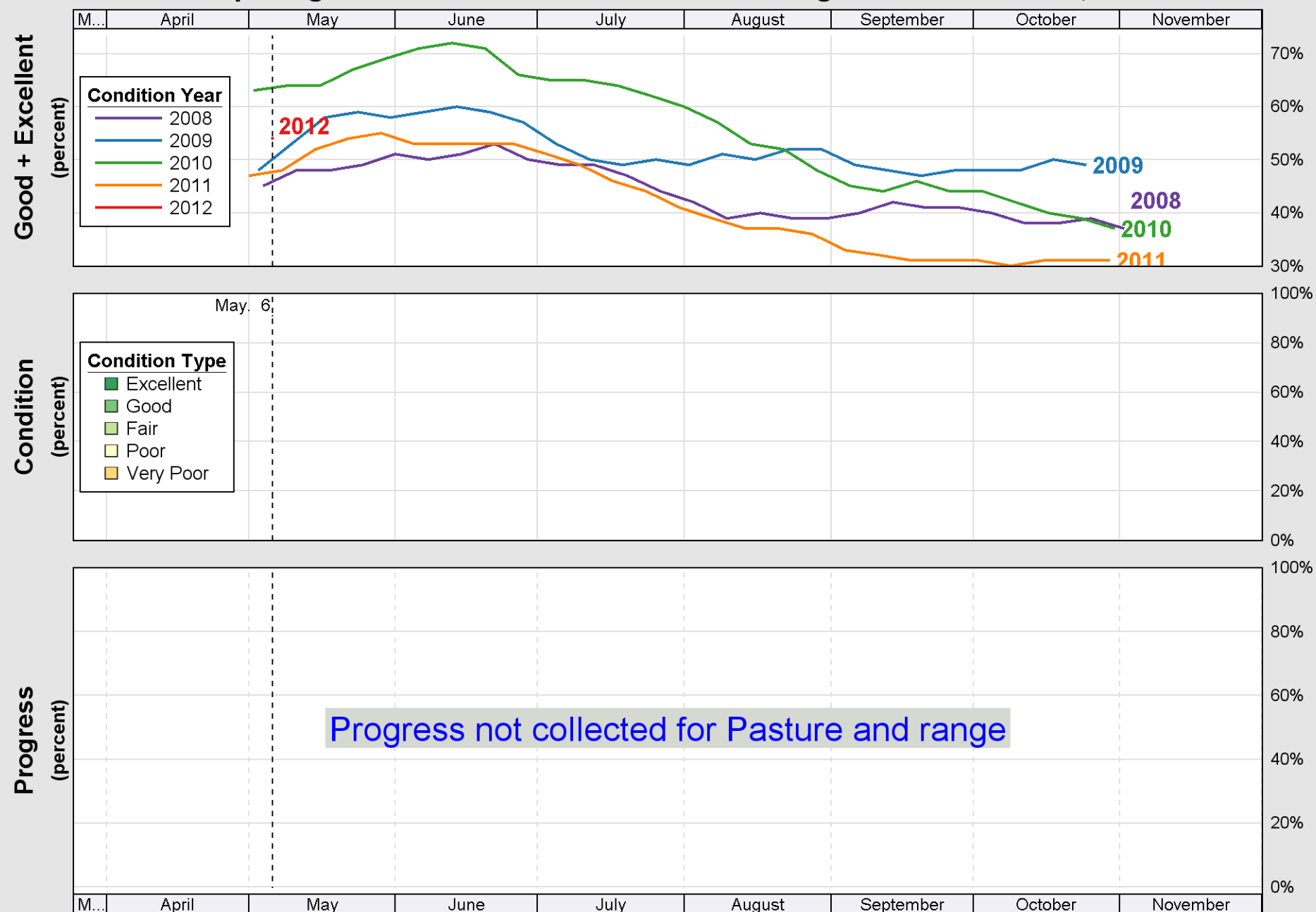
USDA

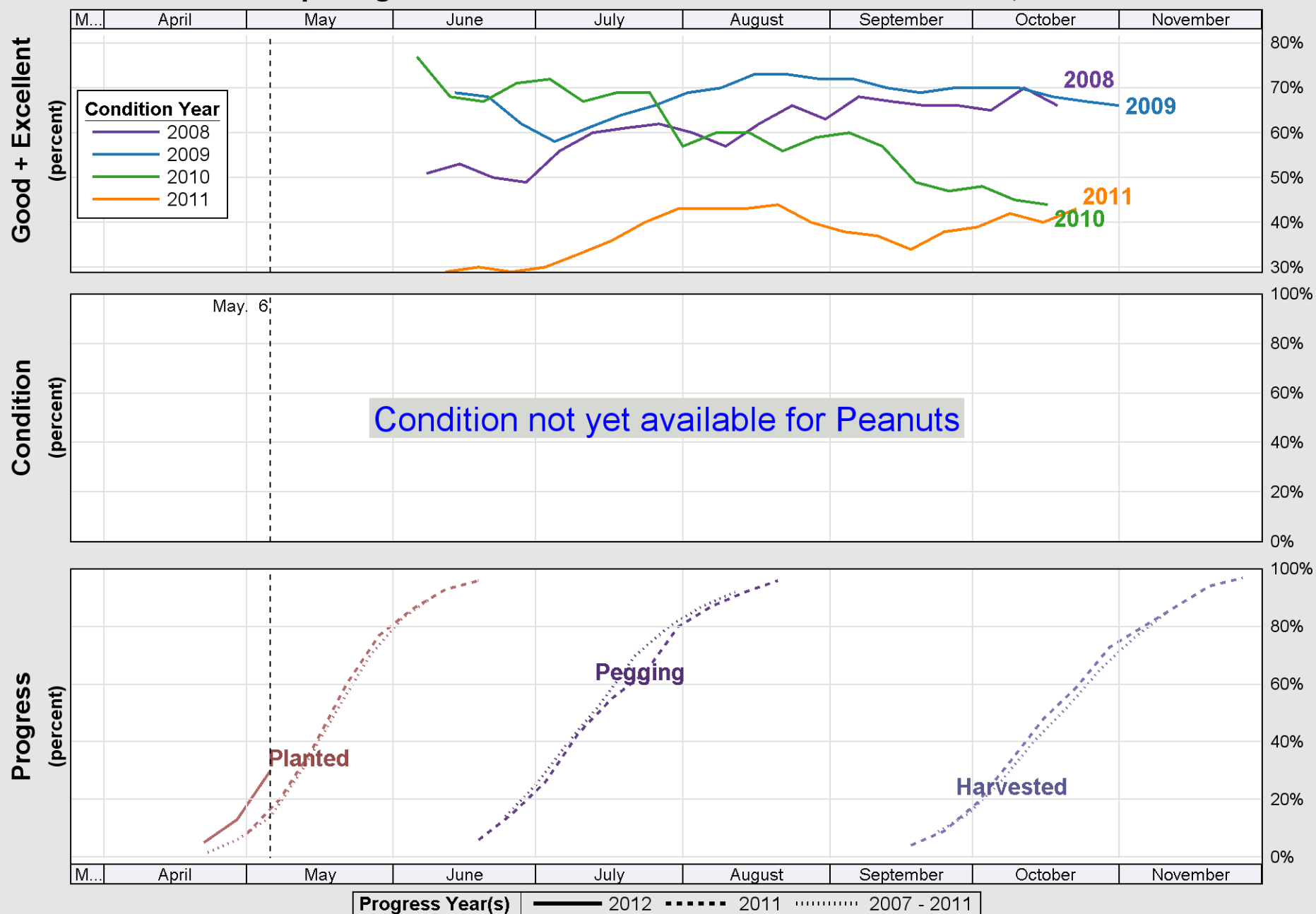
## Crop Progress and Condition: Oats in United States , 2012

NASS



Source: National Agricultural Statistics Service (NASS), Crop Progress Report

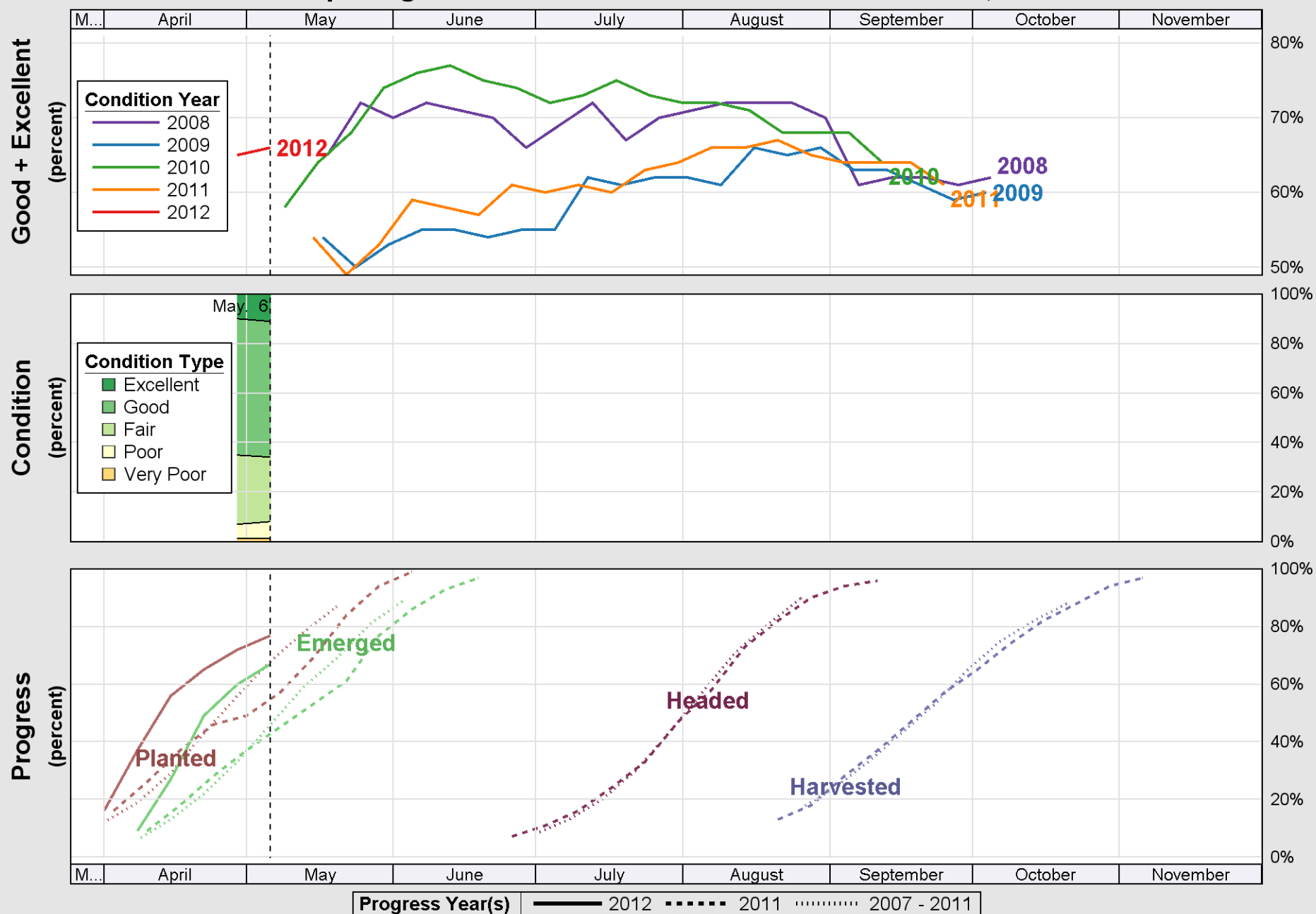




USDA

## Crop Progress and Condition: Rice in United States , 2012

NASS

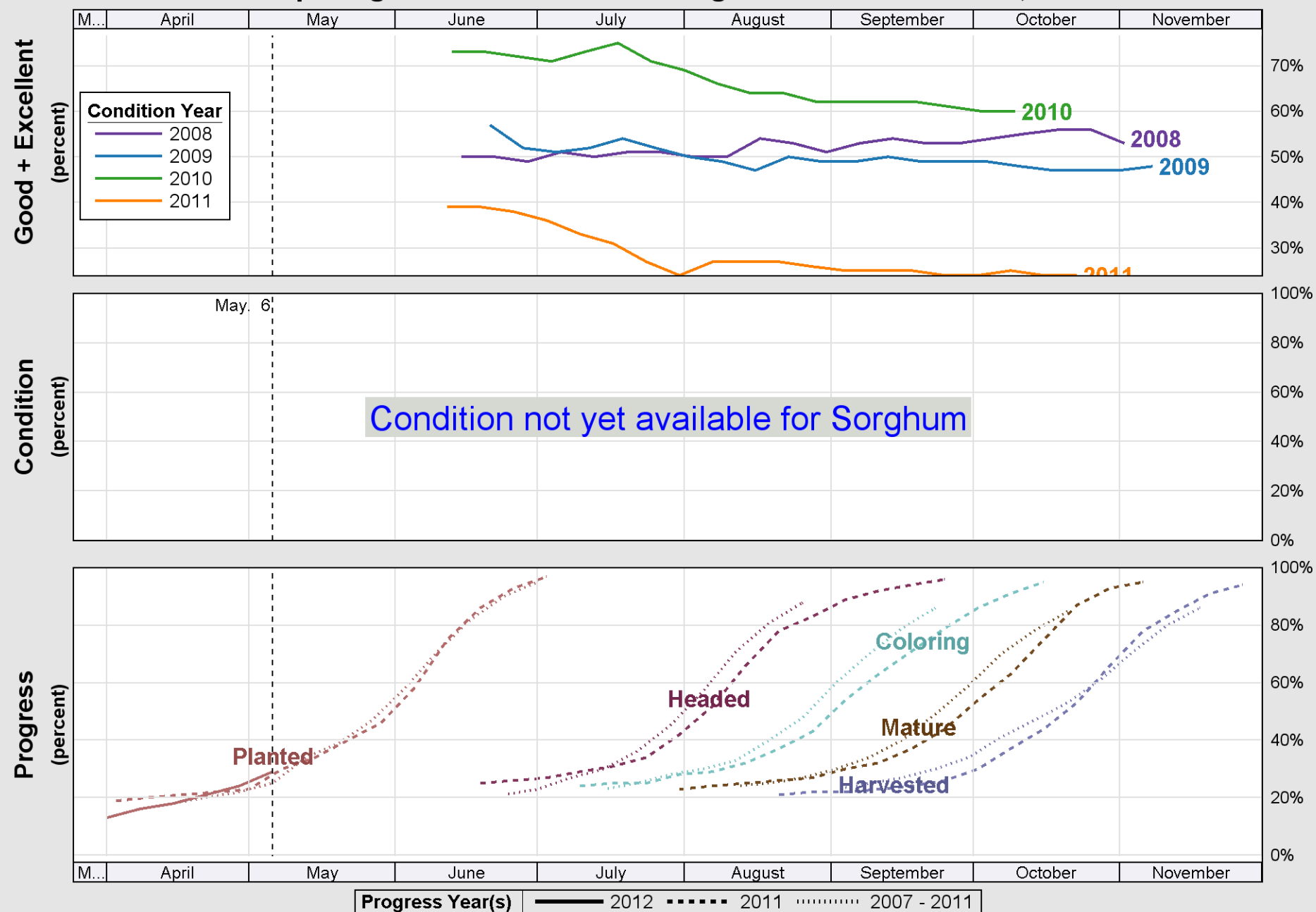


Source: National Agricultural Statistics Service (NASS), Crop Progress Report

USDA

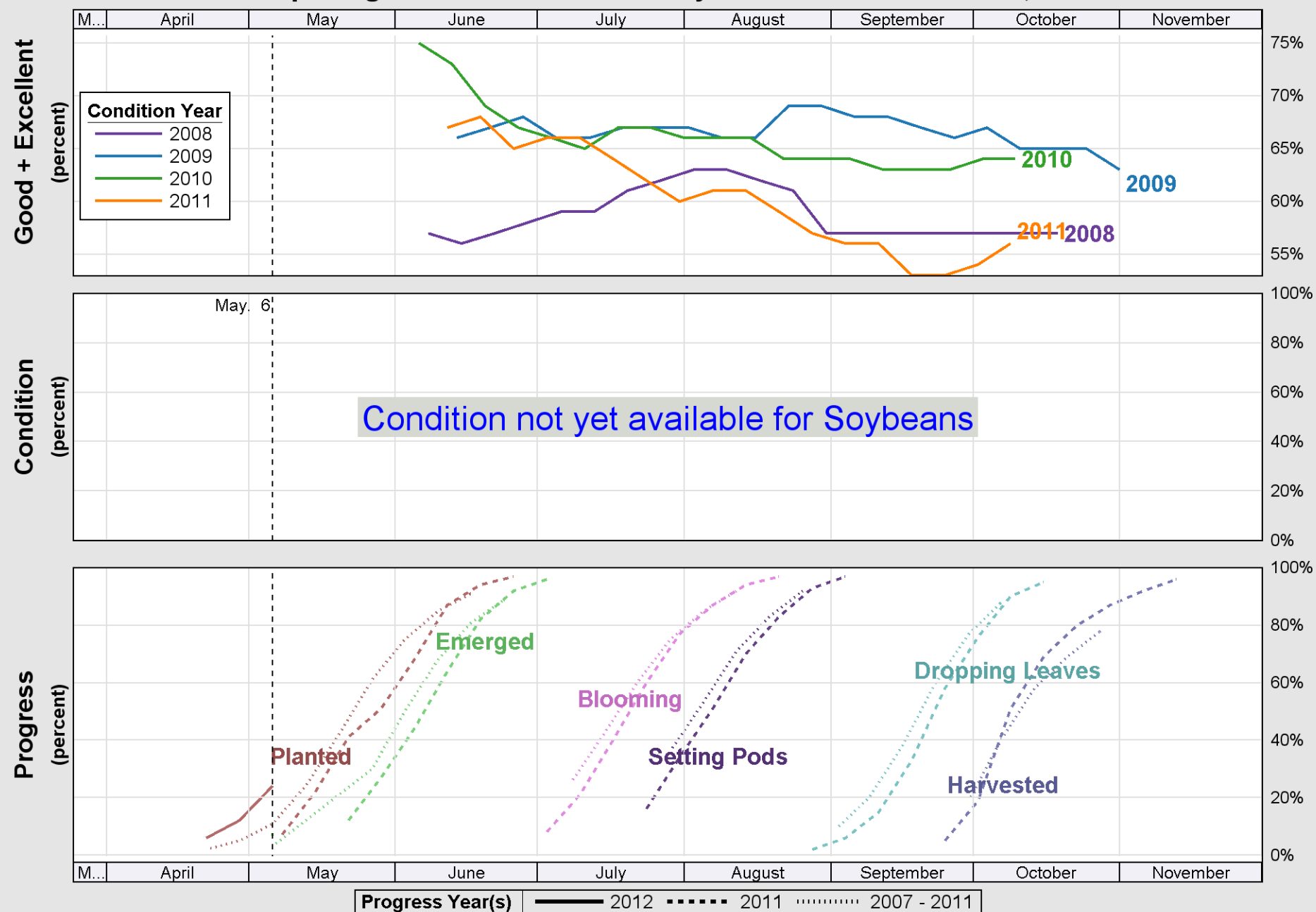
## Crop Progress and Condition: Sorghum in United States , 2012

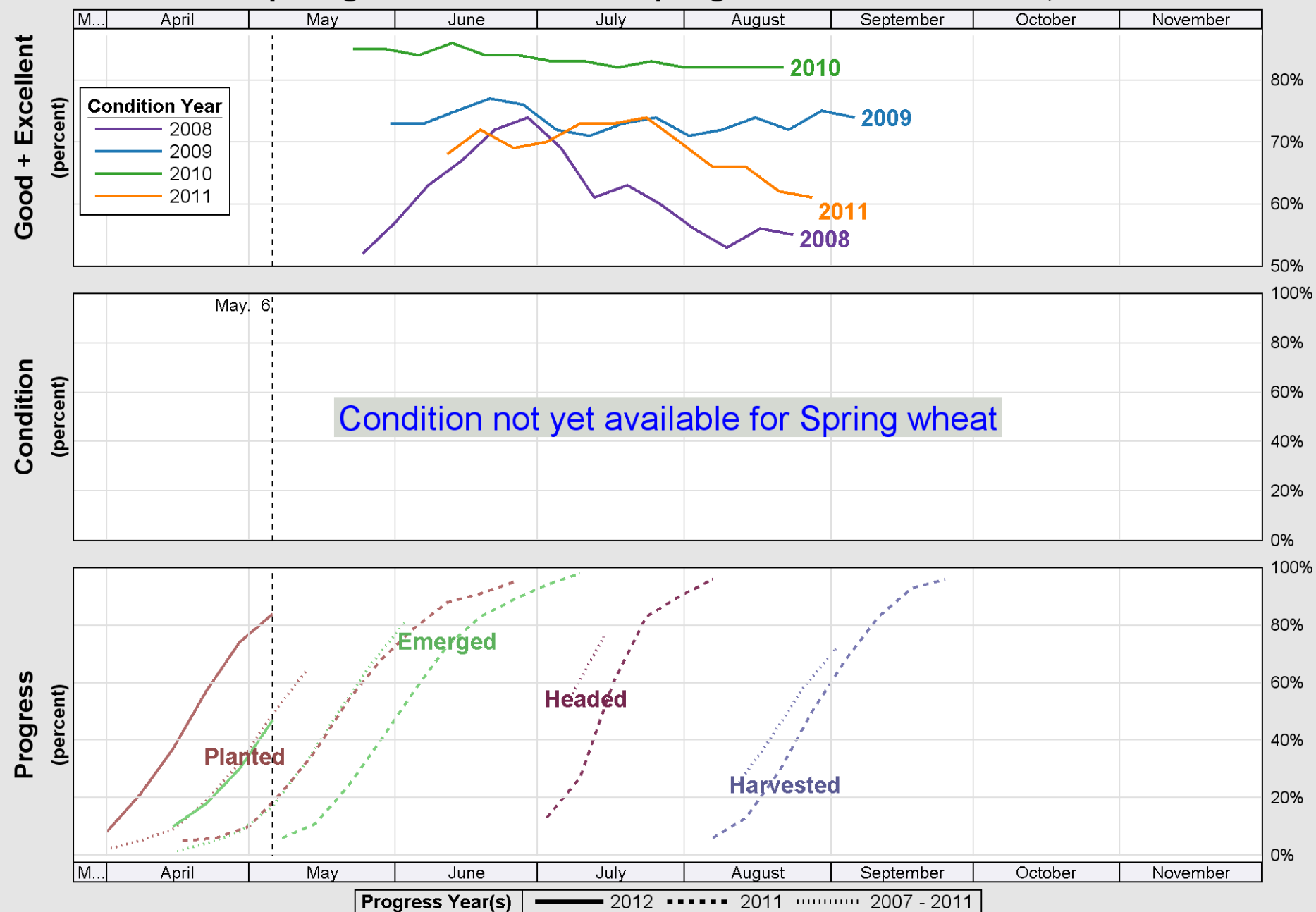
NASS



Source: National Agricultural Statistics Service (NASS), Crop Progress Report



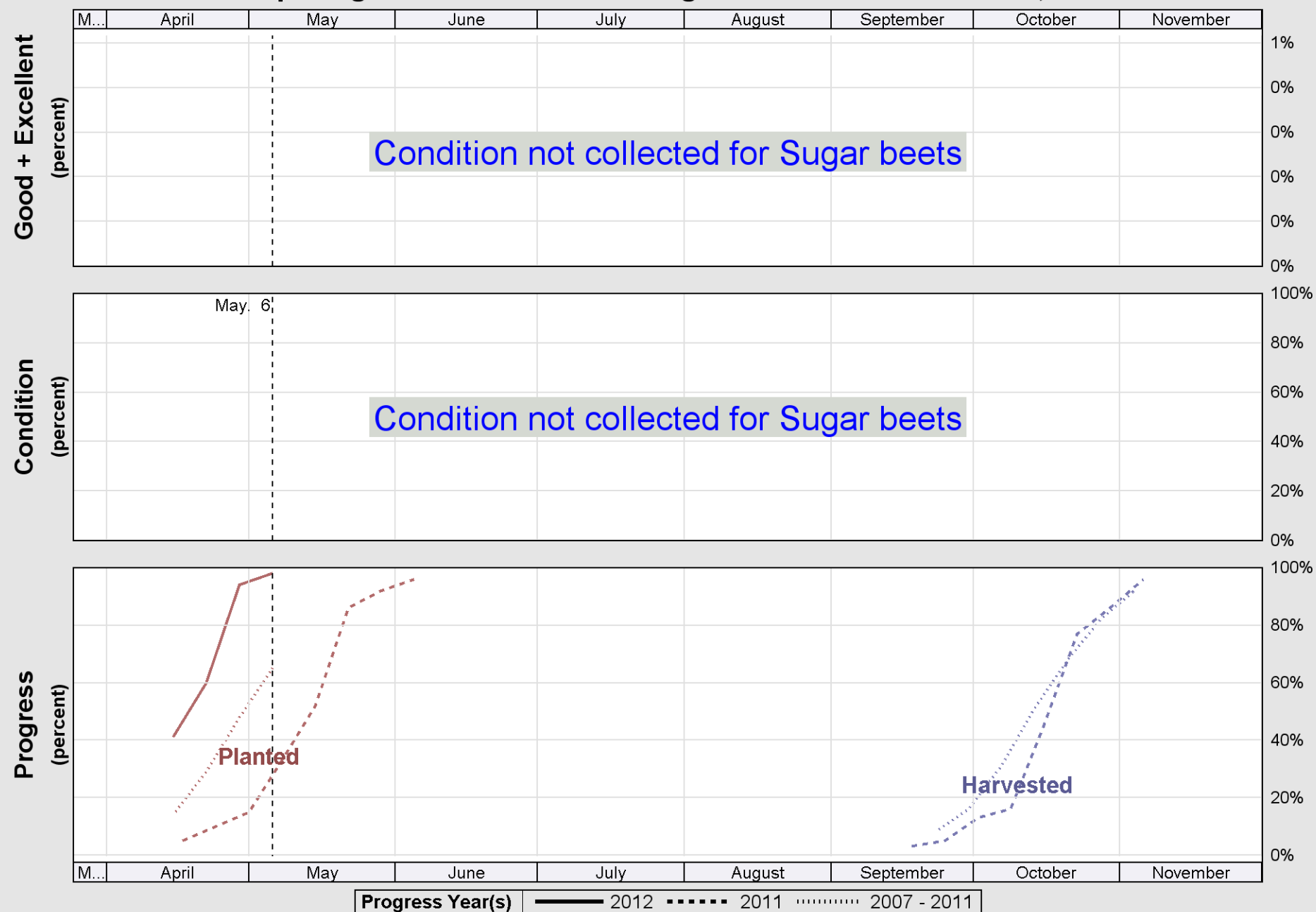




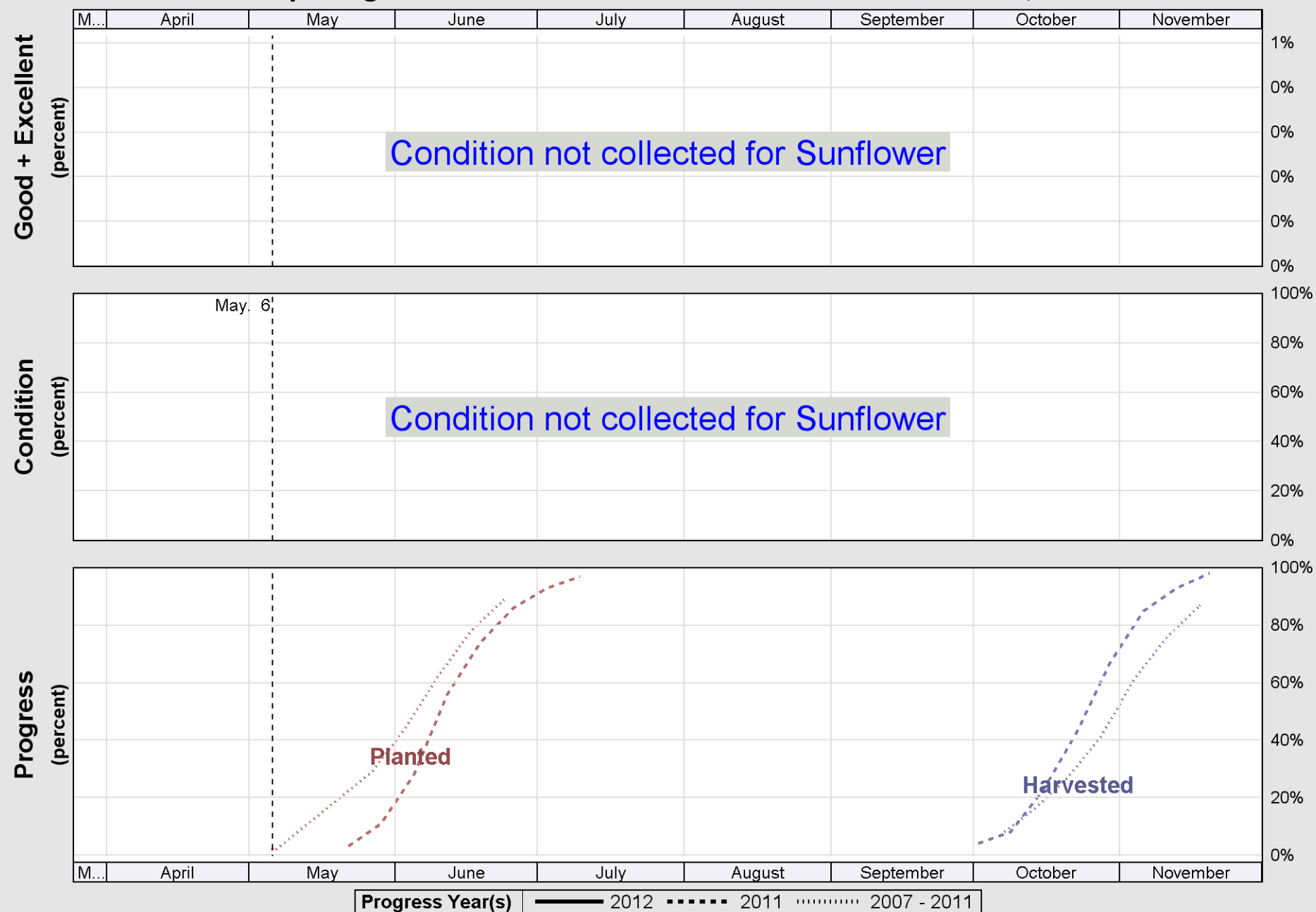
USDA

## Crop Progress and Condition: Sugar beets in United States , 2012

NASS



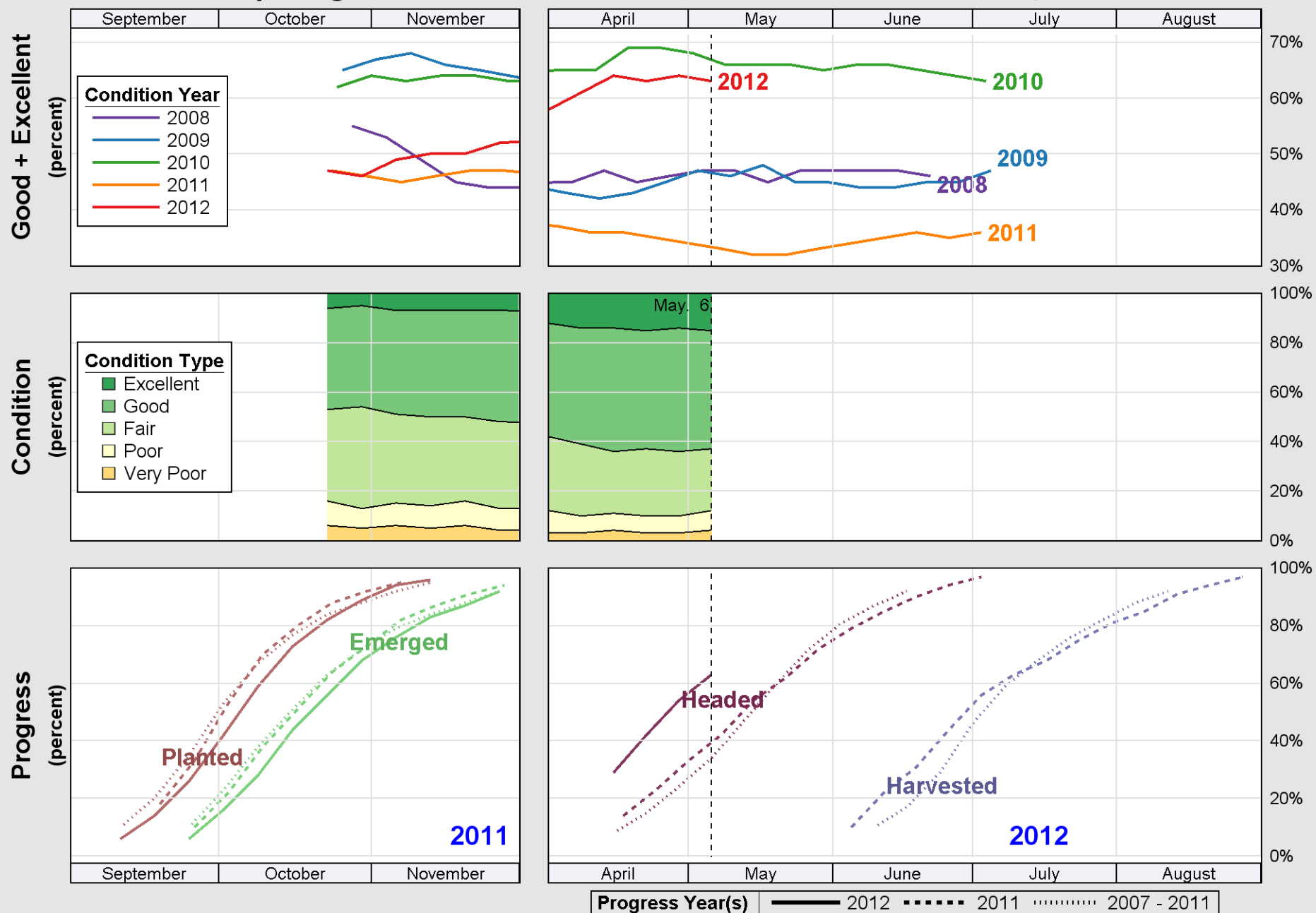
Source: National Agricultural Statistics Service (NASS), Crop Progress Report



USDA

# Crop Progress and Condition: Winter wheat in United States , 2012

NASS



Source: National Agricultural Statistics Service (NASS), Crop Progress Report